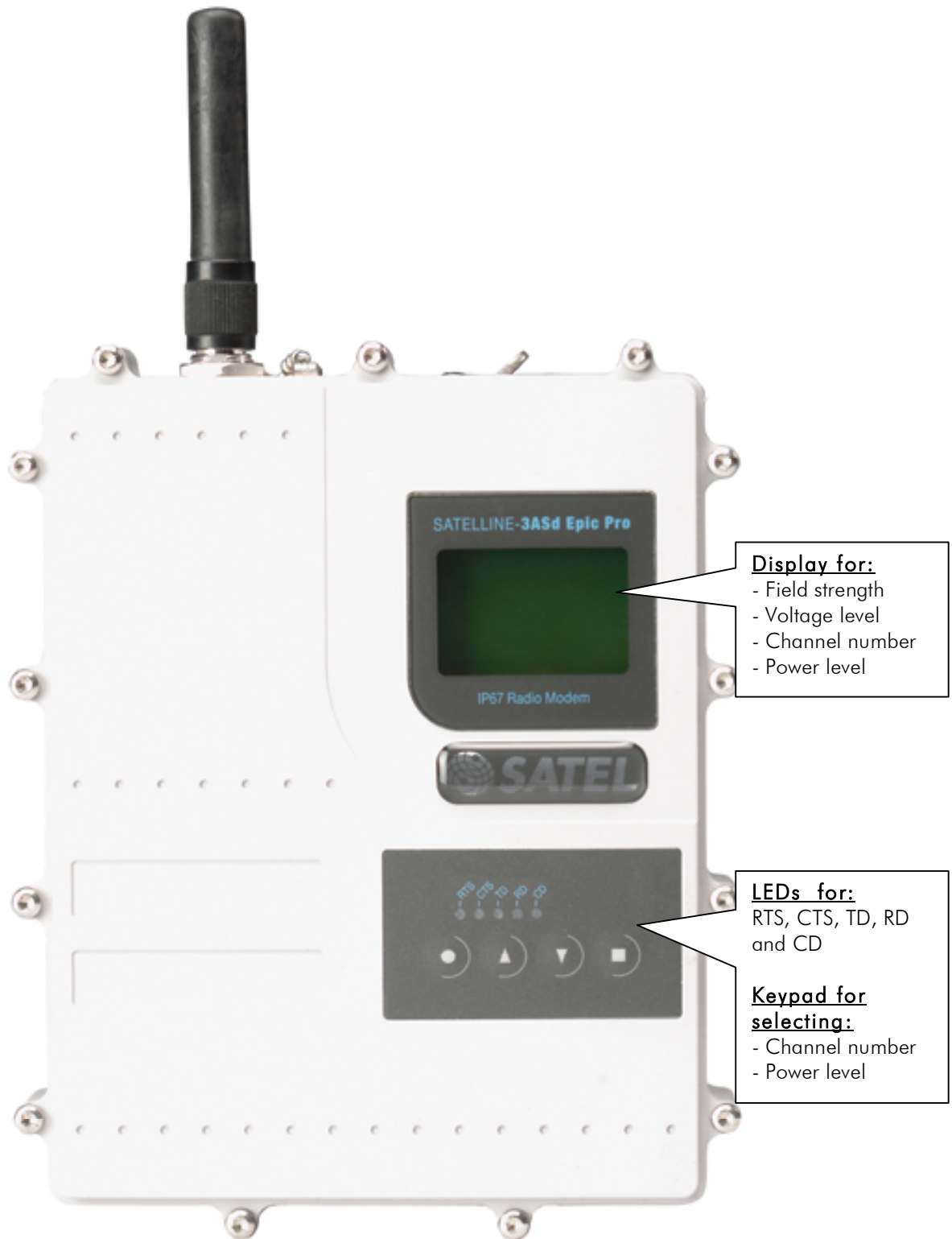


# SATELLINE-3ASd Epic Pro

**IP67 Radio Modem for harsh environment**



## Table of contest

<b>1 SATELLINE-3ASD EPIC PRO SPECIAL FEATURES .....</b>	<b>3</b>
<b>2 GENERAL .....</b>	<b>4</b>
<b>2.1 CONNECTORS.....</b>	<b>4</b>
<b>2.2 DISPLAY.....</b>	<b>4</b>
<b>2.3 KEYPAD ■ ● ▲ ▼ .....</b>	<b>4</b>
<b>3 PROGRAMMING .....</b>	<b>5</b>
<b>3.1 PROGRAMMING.....</b>	<b>5</b>
3.1.1 Channel change by using the LCD and keypad .....	5
3.1.2 Power level change by using the LCD and keypad .....	5
<b>3.2 SPECIAL PROGRAMMING FEATURE; SETTING OF THE CHANNELS .....</b>	<b>6</b>
3.2.1 Channel List Editor .....	6
3.2.2 Channel List Editor-program .....	7
3.2.3 How to setup the channel/frequency list.....	7
<b>ANNEX A – CONNECTOR PIN ORDER.....</b>	<b>8</b>

## **1 SATELLINE-3ASd Epic Pro special features**

SATELLINE-3ASd Epic Pro radio modem fulfils IP67 (NEMA 6) standard. With an IP67 rating a product will be totally protected against dust and remain completely sealed when immersed in water to a depth between 15 cm and 1 meter.

SATELLINE-3ASd Epic Pro modem is equipped with a high power 10 W transmitter. It was designed for easy mobile use in demands field conditions.

The SATELLINE-3ASd Epic Pro is equipped with a liquid crystal display (LCD) and a keypad, used to indicate the current operating status, as well as for changing the operating channel and power level of the radio modem.

The SATELLINE-3ASd Epic Pro exhibits a special "Dual Band" feature. The radio transceiver of the Dual Band version offers as an option two 2 MHz frequency bands, tuned at the factory with maximum separation of 15 MHz between the highest and the lowest frequency. The radio modem can be reprogrammed to operate at any channel within those two bands.

## **2 General**

### **2.1 Connectors**

The device adopts a high standard Lemo compatible waterproof 8-pin data connector. Antenna connector type is 50 ohm TNC female.

### **2.2 Display**

Y	Field strength indicator. Shows how strong is the received signal. For example: -80
012.1V	Battery level indicator.
CH: 1	Channel number followed by the actual frequency. For example 439.0000. The maximum number of channels is 16.
Power :	Shows the output power level. The setting is LOW, MEDIUM, HIGH.
SETUP	Executing commands

### **2.3 Keypad ■ ● ▲ ▼**

Buttons for changing settings.

▲ ▼ For moving the cursor up and down.

## 3 Programming

### 3.1 Programming

Normal programming is done in "programming mode". All standard programming features can be found on the SATELLINE-3AS(d), 869 and Epic user guide.

The radio modem will switch into the programming mode by connecting the Mode pin to the ground. This is easily done by using the NARS-ST adapter cable together with the NARS-1F-4A interface adapter. More information available from your local SATEL distributor.

#### 3.1.1 Channel change by using the LCD and keypad

1. Press ■ = Setup.  
Wait a moment until the display changes.
2. Press ■ = Select
3. Pressing of the ▲ ▼ -buttons will change the channel number.  
Select channel and press ■ = Set, press ● = Exit, press ■ = YES.  
The new settings are now saved to the memory.

```
> Change channel  
Change Power  
  
Exit ▼ Select
```

```
Select channel  
Ch: 1 439.00000  
  
Cancel ▼ Set
```

#### Short guide:

Setup	■
Select	■
Change	▲ ▼
Set	■
Exit	●
YES	■

#### 3.1.2 Power level change by using the LCD and keypad

1. Press ■ = Setup. Wait a moment until the display changes
2. Press ▼ and press ■ = Select.
3. ▲ ▼ will change the power level.

```
Change channel  
> Change Power  
  
Exit ▼ Select
```

4. Select the power and press ■ = Set, press ● = Exit,  
 press ■ = YES.

The new settings are now saved to the memory.

```
> Low      1W
   Medium   5W
   High     10W
Change POWER
```

Short guide:	
Setup	■
Move	▼
Select	■
Change	▲▼
Set	■
Exit/Cancel	●
YES	■

**NOTE!** If the Cancel or Exit is pressed before saving (■ = YES) there will be no changes and the previous settings will remain valid.

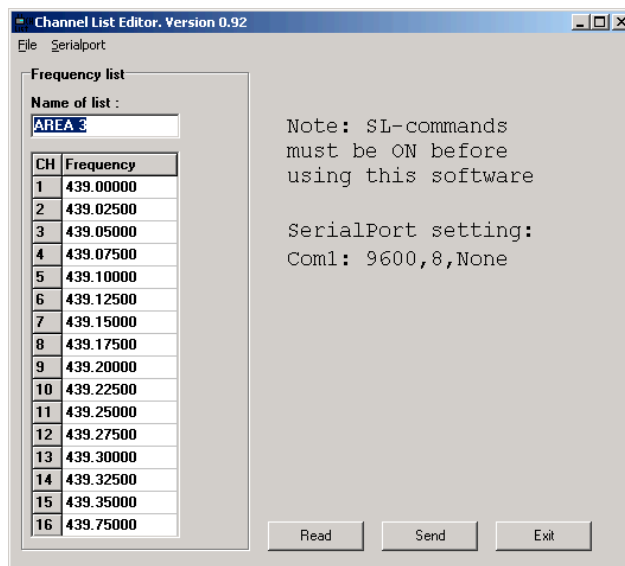
### **3.2 Special programming feature; setting of the channels**

The only special programming feature is setting of the channels. The maximum number of channels is 16 pcs. The channel programming can be done using the Channel List Editor-program. The device must **not** be in the programming mode.

The channels / frequencies can be pre-programmed by SATEL or SATEL distributor. The end user may only change the channel number for the desired channel.

#### **3.2.1 Channel List Editor**

The frequencies for the channels are set by a special Channel List editor -program.

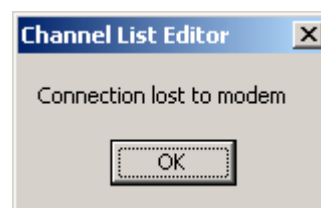
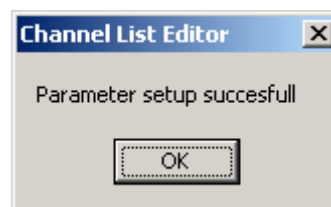


### **3.2.2 Channel List Editor-program**

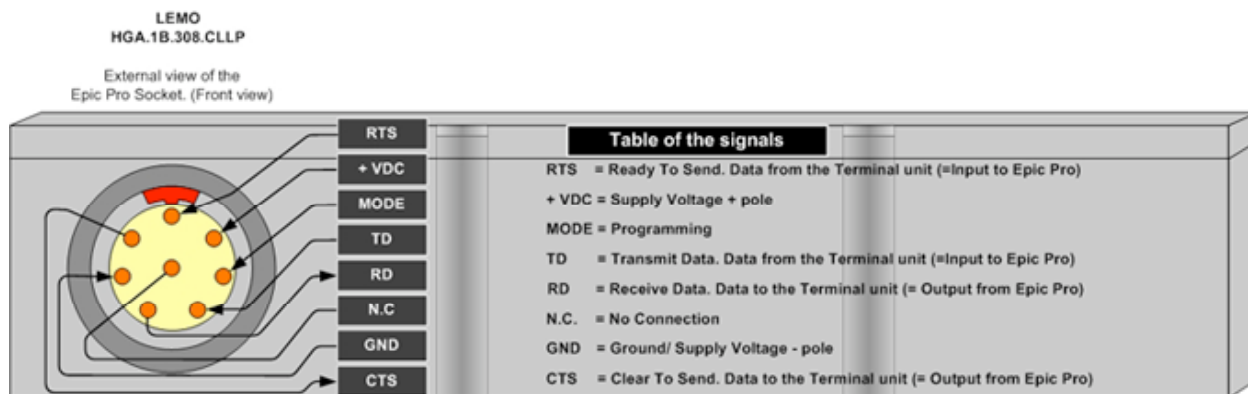
- 1. File**  
Open. Opens the already saved list from the file.  
Save. Saves the list to the file.  
Exit. Exits the program.
- 2. Serial Port**  
Port Com1 ....., Baud Rate, Data Bits, Parity.
- 3. Frequency List**  
Name of the List= any name (anything that helps when using different lists).  
CH= Channel number that will be seen on the Radio Modem's display for the user.  
Frequency=the frequency for the selected channel, for example: 439.32500
- 4. Read**  
When selected, the program will read the list from the radio modem.
- 5. Send**  
When selected, the list will be sent to the radio modem.
- 6. Exit**  
When selected, the program will exit.

### **3.2.3 How to setup the channel/frequency list**

1. Select the Com-port and check that the other parameters are same as modem settings. (for example: 9600, 8, None).
2. Key in the frequencies. Please, note that the list must be started from CH 1, followed by CH 2 etc. There **cannot** be empty blocks in between the channels.
3. When all frequencies are done it is recommended to save the file. Select File -> Save and browse the folder to be saved.
4. In order to send the setup to the radio modem, press Send. When the programming is done the following note will appear.
5. If there is something wrong, the following note will appear.



## ANNEX A – Connector Pin Order



SATEL Oy  
P.O.Box 142, FI-24101 SALO, FINLAND  
Tel. +358 2 777 7800, Fax. +358 2 777 7810  
info@satel.com www.satel.com